



Upgrade path from Generation 1 to Generation 2

August 2021



Contents

Introduction	2
Prerequisites	3
1. Upgrade steps flowchart	4
2. Upgrade steps	5
2.1 Downgrade to NAV 2018 STD	5
2.2 Upgrade to BC 14 STD.....	5
2.3 Upgrade to BC18 STD.....	5
2.4 Bespoke Development	6
2.5 Migrate to Business Central Online.....	6

Introduction

K3|pebblestone generation 1

K3|pebblestone generation 1 is the fashion solution, which is on the market for over 20 years, a fully integrated proven ERP solution tailored to the needs of small and medium sized fashion and apparel companies.

Enabling wholesalers, brand owners, private label and CMT companies in apparel, footwear, sporting goods, corporate and promotional wear and accessories to run their entire business through one software solution.

K3|pebblestone generation 2

With the release of Microsoft 365 Business Central around 2 years ago K3 started to build K3|pebblestone generation 2.

The K3|pebblestone product team began preparation for the cloud solution by identifying the set of business processes. Many of these are a subset of the functionality available in the K3|pebblestone generation 1 solution. However, the primary focus was on identifying the right features for the target cloud market rather than insisting on only using features that already existed in the generation 1 solution. K3 architected and developed K3|pebblestone generation 2 cloud from the ground up, rather than converting features from C/AL to AL. This technically optimises the K3|pebblestone cloud product and greatly enriches the experience of the product.

The goal is to reach a level of functionality in generation 2 that addresses the needs of all customers in our target markets, including larger customers who traditionally needed the generation 1 product. K3 will continue to support and maintain the generation 1 product, but it does not have a roadmap for functional expansion.

Because of this approach, like describe above the upgrade path from generation 1 to generation 2 is a little different from the previous upgrade paths. This document describes how an upgrade between the two solutions can be done.

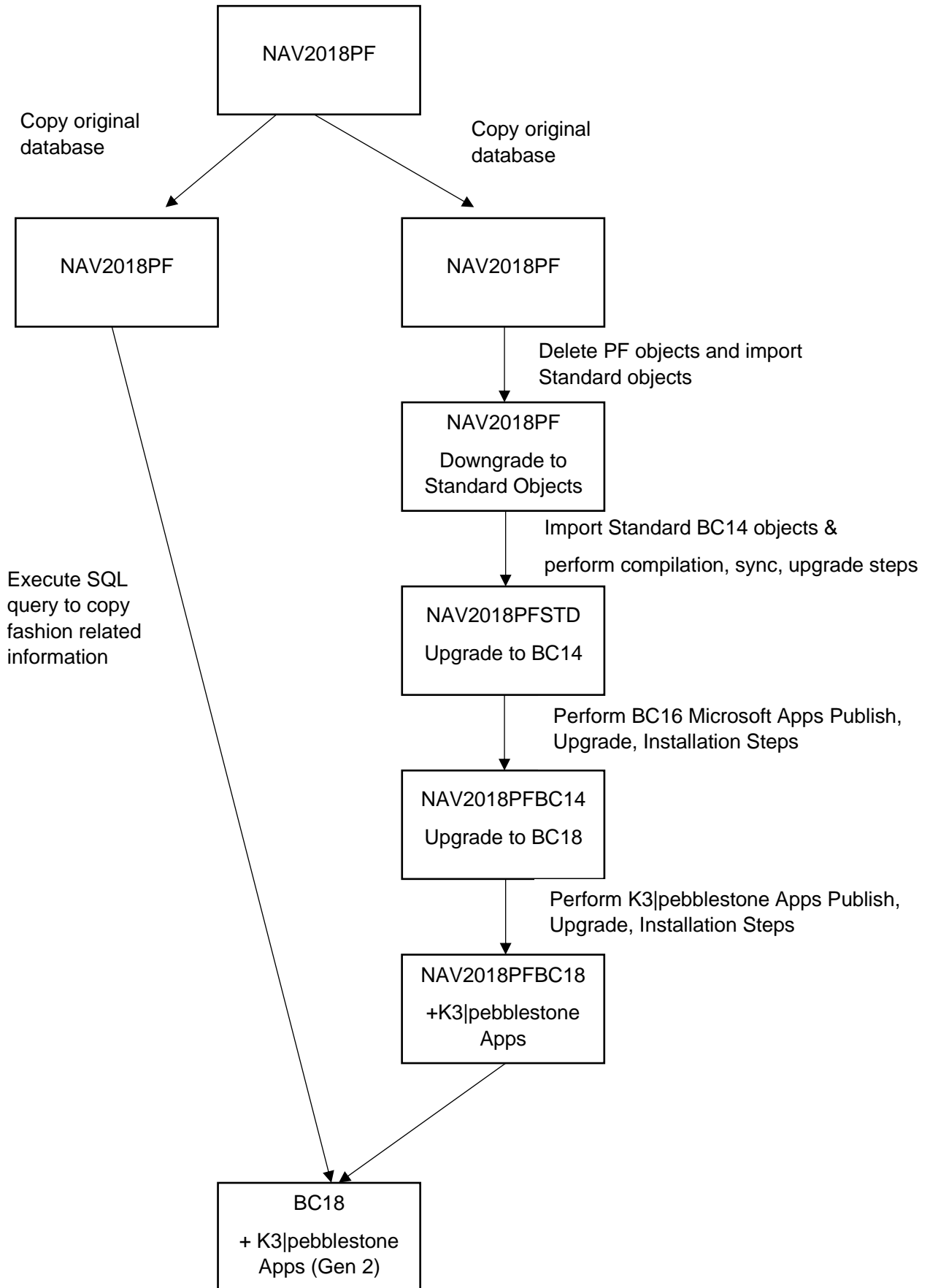
First a flowchart is showing the steps and secondly a short description of the steps with the related links to Microsoft is proving additional insights.

If you have questions about the upgrade path feel free to reach out to us via the support portal.

Prerequisites

- The Dynamics NAV version of the Gen1 K3|pebblestone database must be at least NAV2018.
- Knowledge of using Microsoft upgrade guidelines, links provided.
- Knowledge of SQL queries.
- Bespoke partner development must be converted into an Extension app.

1. Upgrade steps flowchart



2. Upgrade steps

To upgrade from NAV2018 On-premises to BC18 Cloud please follow the steps.

For any other bespoke developments make sure you have already developed the accompanying extension app for these developments.

2.1 Downgrade to NAV 2018 STD

- Uninstall extensions (Uninstall-NAVApp)
- Unpublish extensions (Unpublish-NAVApp)
- Delete PF objects
- Import STD objects – (make sure std object are the same localization/CU of your database)
- Compile and Sync

2.2 Upgrade to BC 14 STD

<https://docs.microsoft.com/en-us/dynamics365/business-central/dev-itpro/upgrade/upgrading-to-business-central-on-premises>

- Import standard BC14 objects
- Set Application Version

<https://docs.microsoft.com/en-us/powershell/module/microsoft.dynamics.nav.management/set-navapplication?view=businesscentral-ps-16>

- Compile and Sync

2.3 Upgrade to BC18 STD

<https://docs.microsoft.com/en-us/dynamics365/business-central/dev-itpro/upgrade/upgrade-overview-v18>

<https://docs.microsoft.com/en-us/dynamics365/business-central/dev-itpro/upgrade/upgrade-technical-upgrade-v14-v18>

- Invoke Nav database conversion (Invoke-NAVApplicationDatabaseConversion)
- Set Application Version (Set-NAVApplication)

<https://docs.microsoft.com/en-us/powershell/module/microsoft.dynamics.nav.management/set-navapplication?view=businesscentral-ps-16>

- Publish (Microsoft) System, Base App, Application
 - Sync (Microsoft) System, Base App, Application
 - Start NAVDataUpgrade
 - Install (Microsoft) Application
 - Publish Pebblestone Apps
 - Sync Pebblestone Apps
 - Install Pebblestone Apps
-
- Execute SQL query – Example query attached



Copy Data Gen 1 to
Gen 2 (Aug 2021).sql

2.4 Bespoke Development

For bespoke developments you can follow and modify the logic found in the supplied SQL query to copy data for any bespoke developed tables.

2.5 Migrate to Business Central Online

<https://docs.microsoft.com/en-us/dynamics365/business-central/dev-itpro/administration/migration-tool>

Note that K3|pebblestone applications must be installed on the on the target Business Central online tenant and be the same version as the source Business Central on-premise database, this also applies to any bespoke applications developed.